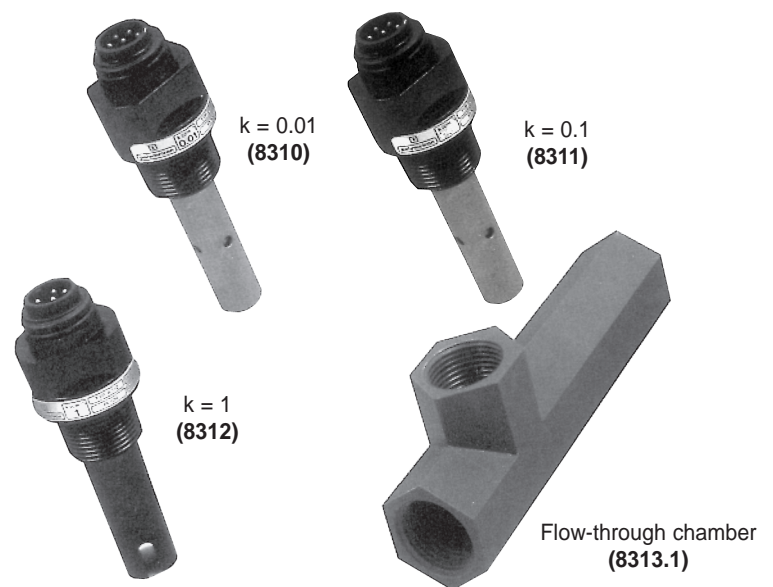


Conductivity / Resistivity probes with two electrodes

Models 8310, 8311, 8312



data sheet

Applications

- Drinking water and wastewater treatment
- Chemical processes
- Demineralized and softened water

Advantages

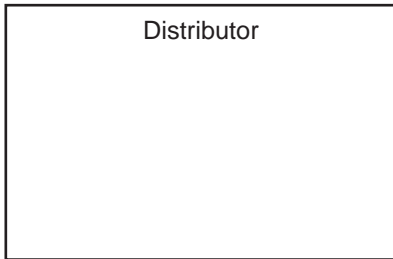
- Mechanical and chemical strength,
- IP65 protection of connector,
- Small and compact sensor,
- Wide measuring range,
- Accuracy tests according to ISO 7888 and ASTM D 1125,
- Quick response time,
- Built-in temperature sensor (Pt 100).

Headquarters:
6, route de Compois
C.P. 212
CH1222 Vérenaz, Geneva
Switzerland

Tel. +41 22 855 91 00
Fax +41 22 855 91 99
salesinfo@hachultra.com



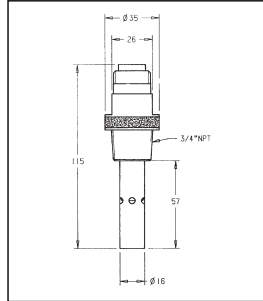
This publication is not intended to form the basis of a contract and the company reserves the right to amend the design and specifications of the instruments without notice.



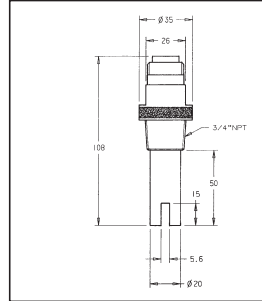
HUA_TE8310revD.qxd



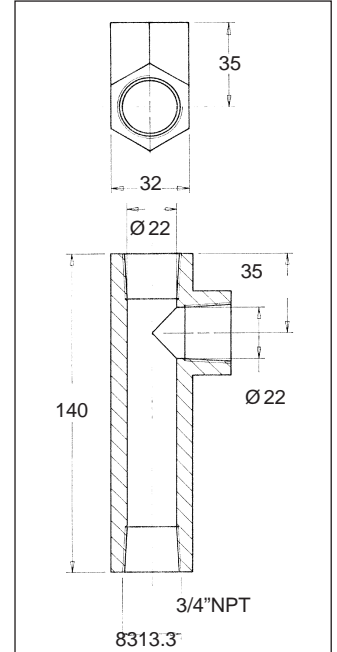
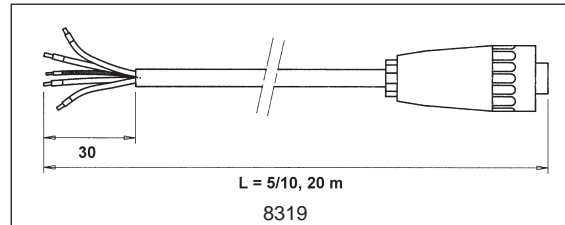
Specifications



8310 (k = 0.01) - 8311 (k = 0.1)



8312 (k = 1)



Model	8310 / 8311	8312
Part number	08310=A=0000 - 08311=A=0000	08312=A=0000
Sample :	125°C at 10 bar	
T. Max	10 bar at 125°C	
P. Max	in 3/4" NPT threading	
Mounting		
Material		
Body (upper part)	black PSU	black PSU
Internal electrode*	SSt 316L	Graphite
External electrode*	SSt 316L	Graphite
Insulator*	PSU	PSU
Connector	Glass Polyester / IP65	Glass Polyester / IP65

* Part in contact with fluid

Measuring range

Cell constant (k)	9125 transmitter	8920/8964/8964 transmitters
0,01 cm	0.01µS/cm–200µS/cm	0.01µS/cm–100µS/cm
0.1 cm	0.1µS/cm–2mS/cm	0.1µS/cm–1mS/cm
1 cm	1µS/cm–20mS/cm	1µS/cm–10mS/cm

Delivered with test certificate indicating the real value of the cell constant.

Accessories

- Cables

Model	length	part number
8319.5	5 m/16 ft	08319=A=0005
8319.10	10 m/33 ft	08319=A=0015
8319.20	20 m/66 ft	08319=A=0020

- Flow-through chamber

Part number : 08313=A=0001

Tmax. = 60°C, 2 bar (140°F, 29 psi)- Pmax. = 10 bar at 25°C (217.5 psi at 77°F)

Connections: 3/4" NPT - threading Material: PVC